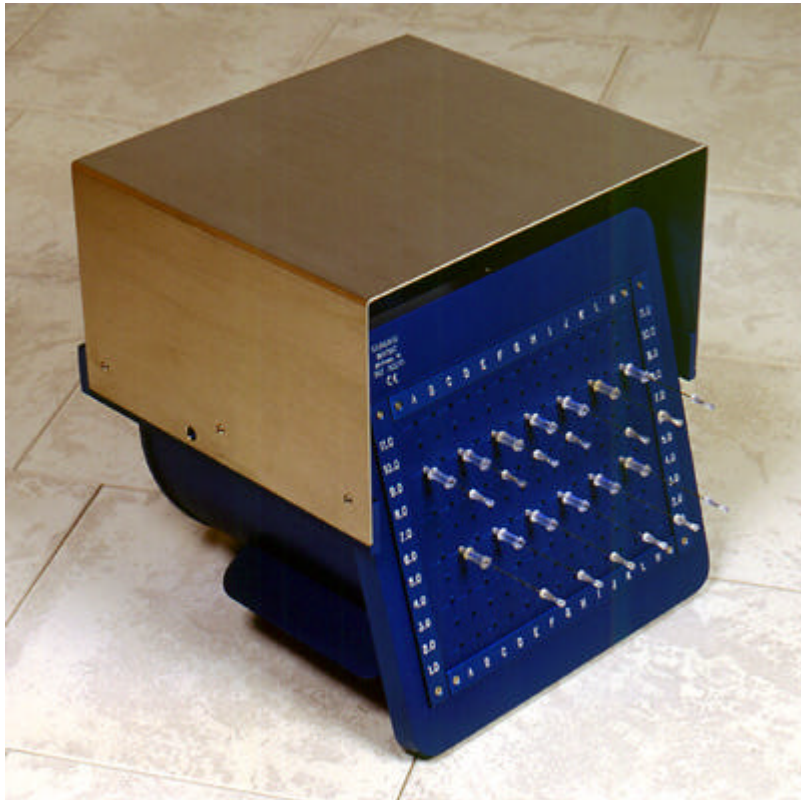




UPGRADED NEEDLE CRADLE DESIGN



For storage of loaded LDR prostate implant needles

Standard Imaging has upgraded the Needle Cradle, REF 90095, to provide a Needle Guard which is attached to the Needle Cradle. This Needle Guard conveniently flips up and over the Needle Cradle to economize space, and to provide an additional sturdy, sterilized work area. The earlier Needle Cradles with the removable Needle Guard can be upgraded to this new design.

ELEVEN horizontal rows - nine rows are sometime inadequate for large prostate volumes. You never run out of rows with difficult cases.

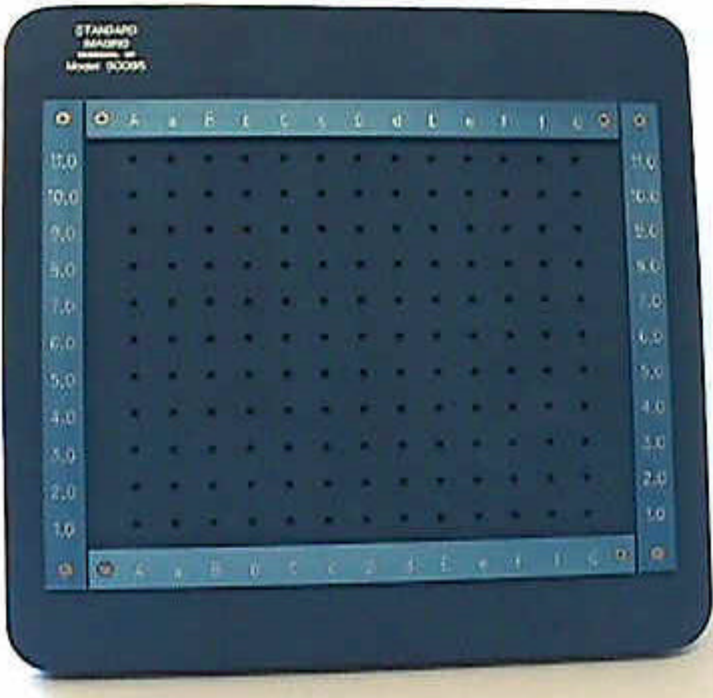
Interchangeable templates - easliy changed aluminum templates for any ultrasound machine or treatment planning system, starting at 1.0 or 2.0. You only need one box for any current or future treatment plans.

Increased shielding - so the signal at 1 meter is less than the NRC specified 1 mR/hr (with 0.35mR seeds).

Light weight, stainless steel needle guard slips over needles to prevent accidental bumping of stylets. Guard can be removed and stored if not used.

Bottom plate prevents loss of and seeds that may become loose.

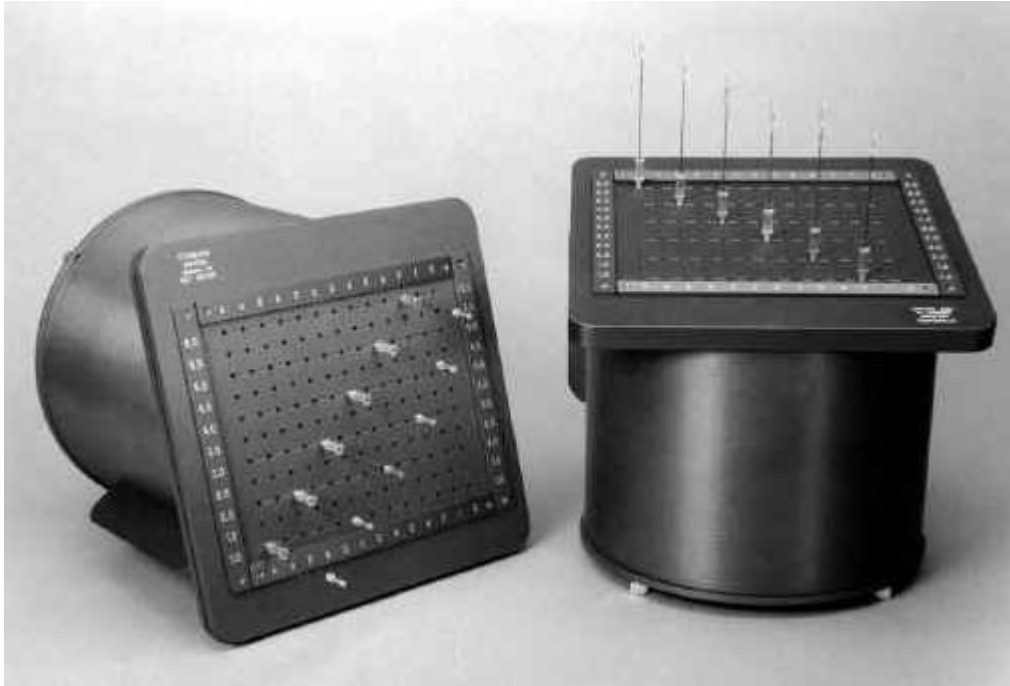
Materials - 3/4" front, 3/8" sides. Dimensions (preliminary) 11.5", 11", 14.5", 20 lbs.



Front view of the Needle Cradle showing the 11 horizontal rows, the 13 columns, and the removable templates.



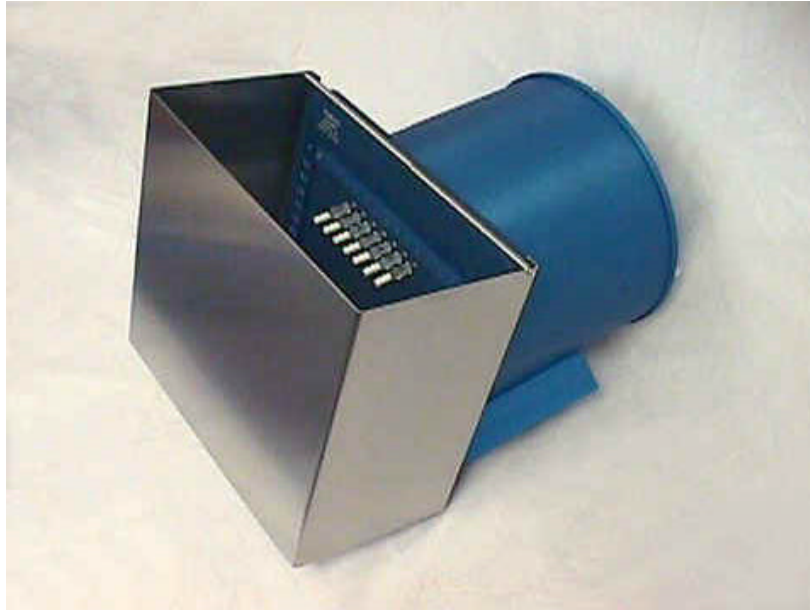
Side view of the Needle Cradle showing the carrying handle.



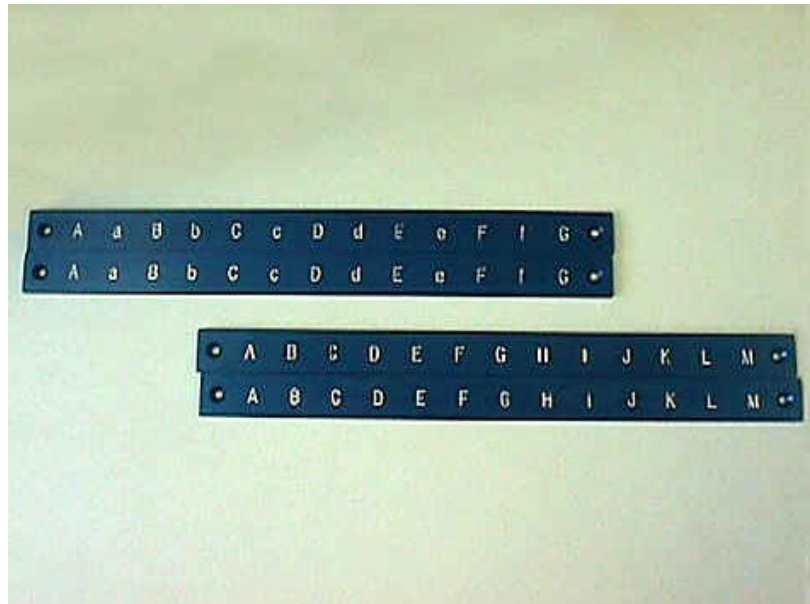
The Needle Cradle can be used to store needles horizontally or vertically.



Back view of the Needle Cradle showing the four quick release fasteners. If a seed is lost from a needle, it is contained in the Needle Cradle. The back is easily removed to retrieve the seed.



Needle Cradle with needle guard in place to prevent bumping of stylets during transport



The two horizontal sets of templates for the Needle Cradle. Other labeling sequences can easily be made if needed.

© Elimpex-Medizintechnik, Spechtgasse 32, A-2340 Moedling, Austria
phone +43-2236-410450
fax +43-2236-410459

